



Walnut Creek Education Foundation  
ANNUAL REPORT 2006/2007





## Walnut Creek Education Foundation

# ANNUAL REPORT 2006/2007

### TABLE OF CONTENTS

3	Because Their Tomorrow Starts Today
5	President's Message
6	WCEF Historical Milestones
7	Donor Sources
9	Your donations at work K-5
11	Your donations at work 6-8
13	Your donations at work 9-12
15	Michael W. De Sa Memorial Fund
16	Ways to Give
19	Executive Committee & Board of Directors
20	Financial Report
22	Business Partners
23	Matching Gift Companies
24	Donor List

This annual report was designed and produced at no cost to WCEF thanks to the generous contributions of Robert Anthony.

**Robert Anthony Strategic Marketing and Design**  
[robertanthony.com](http://robertanthony.com)



WCEF's mission is to actively support and enhance the education of each child in the Walnut Creek School District and Las Lomas High School, and to encourage the entire community to participate in realizing this mission.

The Walnut Creek Education Foundation [WCEF] is a volunteer-led, non-profit organization. Working in partnership with the Walnut Creek School District and Las Lomas High School, WCEF steps in where state funding leaves off, preserving the educational opportunities our kids deserve and need.

The Foundation is comprised of dedicated parents and community members who believe in our mission and believe that our children and schools are our community's greatest assets. Each school within the Walnut Creek School District and Las Lomas High School is represented on our Board of Directors and Executive Committee. Every aspect of our fundraising efforts is performed by dedicated and enthusiastic volunteers who bring a multitude of talents and skills to each assigned task.

Established in 2005, the WCEF is the result of a merger between the Walnut Creek Education Foundation and the Las Lomas Foundation. This was done to maximize fundraising efforts for both foundations which had been serving our community schools since 1983 (WCEF) and 2000 (LLF).

Our annual budget is developed collaboratively with the Walnut Creek School District and Las Lomas High School through a yearly prioritization process and in accordance with our funding guidelines. The budget serves as the basis for our annual fundraising goal.

More than ninety percent of the monies we raise from parent donors, non-parent contributors and business sponsors go directly to the schools we serve.





Dear Friends of WCEF,

During the 2006-2007 school year, WCEF contributed \$510,000 to Walnut Creek School District's five elementary schools, Walnut Creek Intermediate, and Las Lomas High School. These dollars paid for programs that make the difference between a basic education and an extraordinary education. Funds were raised from donors of the parent, teacher and business community. Although donations to the Foundation fell short of our initial goal, thanks to the budget-balancing efforts of the School Districts, valuable programs were not reduced last year. In October 2006, WCEF lost one of its strongest advocates, Superintendent Michael W. De Sa. However, his passion for excellence in education lives on. His family asked that donations in his memory be made to WCEF which resulted in the establishment of WCEF's Endowment Fund and the Michael W. De Sa Scholarship.

This is our third year after the merger between WCEF and the Las Lomas Foundation, and WCEF is the strongest it has ever been. Our Communication Team meets twice a month to develop materials and strategies to reach our donors and potential donors. This year, we formed a highly motivated Business Action Team with the goal of significantly increasing business sponsorships. Our Parent Campaign Team made of a strong group of volunteers from each of the school sites, has raised to date over \$500,000. Efforts will continue to raise the additional funds needed to meet our budgeted goal. This will insure that programs can be supported fully this year.

Take a few moments to read through this annual report and see how your dollars are working to provide the students of Walnut Creek School District and Las Lomas High school with an extraordinary education. On behalf of WCEF and its volunteers I thank you for your support.

Glynnis E. Cowdery  
WCEF President

1983

Walnut Creek Education Foundation founded to support educational programs in Walnut Creek – goes through many iterations including:

- > Combining with other charities to raise funds for a large number of Walnut Creek schools
- > Years when the organization faded entirely and raised no money
- > Vast fluctuations in both fundraising and numbers of volunteers

2000

Las Lomas Foundation was founded to fund capital improvements at Las Lomas High School

2001

WCEF hires first employee with a job description of Community Outreach

2002

In 2002 the California State budget crunch forced both organizations into an unprecedented fundraising mode:

- > WCEF's fundraising budget was increased from \$50,000 to \$300,000 and WCEF took on the role of providing full funding for vocal music, art and P.E. programs in the elementary schools and a curriculum-based arts program at the intermediate school.
- > Las Lomas Foundation stepped up fundraising and shifted funding priorities from capital improvements to student programs and teachers salaries. Prior to 2002 LLF raised less than \$100,000 each year. In 2003 and 2004 the fundraising goals were raised to \$400K and \$500K respectively.

2003

WCEF fundraising goal bumps from \$30,000 to \$300,000 – takes over funding of music, art & P.E. in K-5 schools

- > WCEF merges with LLF, becoming WCEF K-12 / hires Executive Director
- > WCEF conducts first-ever "Spring Pledge" fundraising campaign
- > Forms new fundraising partnership with WCI PTA
- > Establishment of Endowment and Michael De Sa Memorial Scholarship Fund
- > Strategic Plan Adopted with focus areas of Parents, Business and Community

During the 2006-2007 school year, WCEF raised a total of \$622,525.00. These funds come from four primary sources:

#### PARENTS

The majority of WCEF donations are parent contributions. The parents donate throughout the year, many receiving matching donations from their employers. For the 2006/2007 campaign 1728 contributors donated a total of \$565,968.21 to our parent campaign.

#### BUSINESS PARTNERS

WCEF has a base of business partners who contribute every year. The local businesses have contributed \$36,000 and \$70,000 of in-kind donations, including printing and advertising. Business sponsors are recognized at our events and in various publications including the WCEF Business Directory, which is circulated with the Walnut Creek Journal and mailed to 38,000 Walnut Creek households.

#### COMMUNITY

In 2006-2007, WCEF received donations from 263 community donors consisting of non-parents and District staff and teachers. Donations were made both to the general fund and the Michael De Sa Memorial fund for a total of \$48,798.

#### OTHER FUNDRAISING

Throughout the year WCEF was the beneficiary of many community events including Christmas Tree Lot, Walnut Creek on Ice, the Best of Walnut Creek, WCEF Night at the Giants, Elementary School Auctions, and Mavericks Barbeque hosted by Walnut Heights Elementary.



Elementary School Level / Kindergarten Through 5<sup>th</sup> Grade

The Walnut Creek School District includes five elementary schools, Parkmead/PALS, Murwood, Buena Vista, Indian Valley and Walnut Heights K-5 schools. Students from these elementary schools continue their education at Walnut Creek Intermediate and eventually at Las Lomas High School.

At the elementary level WCEF funds programs that otherwise would not exist. These programs include standards based instruction in Visual Art, Music, and Physical Education. In addition to these programs WCEF funds collaboration time for the classroom teachers. Collaboration time allows every teacher to improve teaching strategies and refine curriculum to better meet the needs of all students. Every year WCEF has been able to provide the Walnut Creek School District with the necessary funds to be able to continue these quality programs that the school's students deserve and need.

“WCEF does tremendous work to fill the gaps supporting art, music and PE programs that are essential for a well rounded education.”

~ Patricia Wool  
WCSD Superintendent



Intermediate School Level / 6<sup>th</sup> Through 8<sup>th</sup> Grade

Walnut Creek Intermediate School programs supported with WCEF funds have included: an on-campus supervisor who ensures student safety before school and during lunch, Homework Improvement Program, after school programs, assemblies, W&B (Where Everyone Belongs) program/orientation, health & safety, band supplies and stipends, art supplies, African Drummers, and the Civic Arts Visiting Artist program. The Homework Improvement Program helps parents and students in organizing and providing study skills related to their ongoing success in academics.

The Civic Arts Visiting Artist program is a hands-on interactive arts program in which every student at WCI participates. Throughout the school year theatre and visual arts artists visit students in their core and history classes. During these visits the Artists tie the arts to the students' curriculum. Reports from teachers and artists indicate that these visits engage the students in new ways. Shy students become actors. Students who don't view themselves as artists learn how to problem solve and with some effort turn their "mistakes" into something to be proud of.

"WCEF is an integral part of providing a high quality education to all students at WCI.

Our students would suffer without the support provided by WCEF."

~ Kevin Collins  
WCI Principal



High School Level / 9<sup>th</sup> Through 12<sup>th</sup> Grade

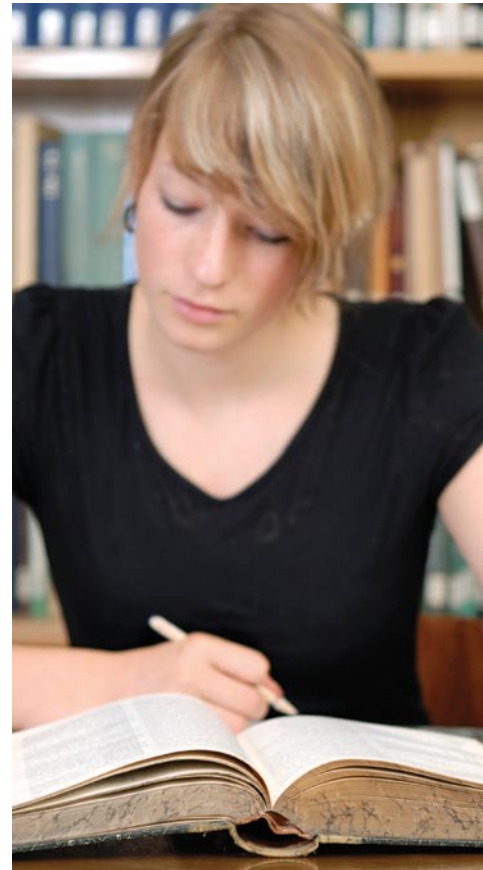
WCEF raises funds at Las Lomas both for its partner groups (Boosters, Music Foundation, Student Body, and PTSA) as well as academic programs and instructional materials. The Crisis Counselor and Career

Counselor are two of the critical positions that would be reduced or lost without WCEF support. WCEF provides Instructional materials, Science supplies, technology and a computer lab assistant. WCEF funds the support the students rely on to continue academic success.

“We offer what every single student in California should be getting. State dollars alone are not sufficient to support an excellent, balanced educational program.”

~ Jim Negri  
AUHSD Superintendent





This year the community lost Walnut Creek School District Superintendent Michael W. De Sa. Mr. De Sa played a pivotal role in the education community. He was a strong advocate of WCEF and the programs it funds. At the time of his passing his family requested that donations be made to WCEF, a portion of which would seed WCEF's endowment and the remaining contributions would establish the Michael W. De Sa Scholarship.

At the 2007 Las Lomas Senior Awards Night, Las Lomas Senior Tyler Duncan was awarded the first annual Michael W. De Sa Memorial Scholarship. As described by Lisa De Sa the scholarship recipient should exemplify "the type of student that Mike enjoyed mentoring so much: a well-rounded graduate of the Walnut Creek schools who has nurtured his life's passions both in school...and outside the confines of academia, through service in the community and other pursuits." Nine Las Lomas seniors applied for the new scholarship and Tyler Duncan's passion for service in his community and abroad stood out. Not only had he held three class offices at Las Lomas while participating in the Take Action Club and Assisteens, Tyler helped build classrooms in rural Kenya with the international organization, Leaders Today. Tyler will use the \$2000 scholarship at the University of Colorado.

"Mike De Sa was the guiding force behind building the best possible team within the Walnut Creek School District. By ensuring the collaborative efforts among staff, parents and community, our children receive a high-quality education in an outstanding learning environment."

~ Katie Peña  
WCSD Governing Board Member



Lisa De Sa, Tyler Duncan, Caitlyn De Sa, Sam De Sa  
Photo by James Fidelibus, photographer

## There are many ways to give and maximize your donation to WCEF.

### Donation/Pledge Card

Complete the Donation Card at the back of this report and return it with your check or credit card information.

### Online Donations

You can donate online using our secure Paypal service by visiting our web site: [WCEFK12.org](http://WCEFK12.org).

### Donate by Phone

You can phone in a credit card donation to our office by calling (925) 933-WCEF (9233).

### UNITED WAY DONOR OPTION PROGRAM

This is another way to support our children and help your company reach its goal of 100% participation at the same time! WCEF can be designated to receive up to 90% of your United Way Donation. Simply request a donor choice form from your United Way Coordinator at work and fill it out with the following information: WCEF K-12 Foundation #2492, P.O. Box 186, Walnut Creek, CA 94597.

### CORPORATE MATCHING - HELP US HELP YOU GET FREE MONEY!

It is very likely that your employer has a corporate matching program and we encourage you to take advantage of it! You can check with your Human Resources department to find out. We have a partial list of employers with matching programs on our web site. If you don't see your employer, be sure to ask your HR department.

### STOCKS AND SECURITIES

Donate appreciated stocks and securities and take a tax deduction for their full current value – not just what you originally paid – and bypass capital gains taxes. For donations of stocks and securities, please contact Lawrence Kolka of Edward Jones at (925) 472-0322 or [Lawrence.Kolka@EdwardJones.com](mailto:Lawrence.Kolka@EdwardJones.com).

### DONATE YOUR VEHICLE

WCEF has partnered with the V-DAC Vehicle Donation Program – a free, convenient service for converting your extra car, truck, or RV into a tax-deductible donation benefiting our schools and programs. You can learn more and then donate online by visiting the Vehicle Donation Program web site or call 866-332-1778. Don't donate your car or truck to some charity you have never heard of! This trusted service makes sure your vehicle is properly handled so you get your tax deduction and WCEF gets the benefit of your donation.

## For information on Foundation needs and how to give, please contact us.

### Volunteering

Are you looking for a volunteer opportunity that will give you a broad view of our community's children's educational future and at the same time provide a direct benefit to them? WCEF works with all 5 elementary schools, Walnut Creek Intermediate and Las Lomas High School.

Join our team of talented and energetic volunteers from all schools within the district, broaden your circle of friends and community contacts, and have fun! Contact us to let us know your volunteer interests and learn about the many volunteer opportunities available. Give us a call!

### DONATIONS IN KIND

Business supporters who offer products or services as a contribution to will be granted the benefits of the sponsorship levels for which they qualify based on the volume/value of the products or services donated.

### MEMORIAL TRIBUTE

Honor a friend or loved one with a special gift to WCEF on their behalf. Whether in memoriam or in tribute of a special event or milestone, this is a great way for you to show appreciation to someone special as well as an opportunity to help our schools.

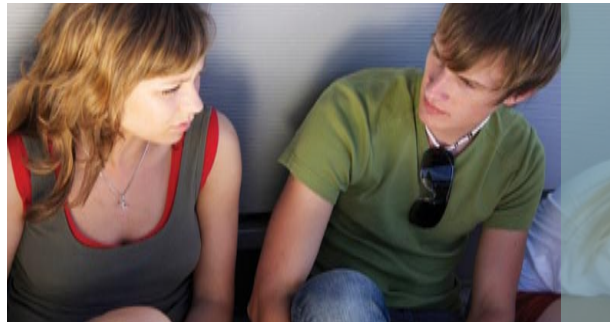
### CHARITABLE REMAINDER TRUST OR TRADITIONAL BEQUEST

This is a wonderful way to continue to support WCEF and the future of the children of the Walnut Creek School District and Las Lomas High School.

Michael W. De Sa Scholarship – Donations to the Scholarship fund can be made online or by contacting our office at 925-933-9233, or by mailing to WCEF, P.O. Box 186, Walnut Creek, CA 94597.

WCEF Endowment – In addition to our annual campaign you can make a donation to our Endowment to insure for the longevity of the Foundation. Contact our office to make your donation.

All donations to WCEF are tax deductible to the full extent the law allows.



Executive Committee

2006/2007

Glynnis Cowdery  
PRESIDENT

Lorraine Souder  
VICE PRESIDENT

Laurie Goodwin  
SECRETARY

Kathy Schueler  
TREASURER

Joanne Hernandez  
AUDITOR

Cindy Abramson  
COMMUNICATIONS CHAIR

Nancy Rivara  
COMMUNITY OUTREACH CHAIR

Dierdre Hannigan  
FUNDRAISING CHAIR

Allison Ridenhour  
Dana Carrigan  
FUNDRAISING ELEMENTARY  
CO-CHAIR

Erin Sicotte Buena Vista  
Vera Caulfield Indian Valley  
Paula Shaw Murwood  
Tim Cochrane Parkmead PALS  
Taun Hall Parkmead  
Terry Hight Walnut Heights  
Karyn Kessler & Kathy Hill WCI  
Robert Duncan Las Lomas HS  
SCHOOL SITE LIASIONS

Lorie Wilborn  
Karen Low  
EVENTS CO-CHAIRS

Emily Schardt  
EXECUTIVE DIRECTOR

Kelly McGinnis  
BUSINESS CAMPAIGN DIRECTOR

2007/2008

Glynnis Cowdery  
PRESIDENT

Joanne Hernandez  
VP FINANCE/TREASURER

Theresa Burke  
VP ADMINISTRATION

Laurie Goodwin  
SECRETARY

Kathy Fuller  
AUDITOR

Sue Flautt  
COMMUNICATIONS CHAIR

Cheryl Miller  
BUSINESS COMMITTEE CHAIR

Nancy Rivara  
COMMUNITY OUTREACH CHAIR

Erin Sicotte  
PARENT DEVELOPMENT  
COMMITTEE CHAIR

Shannon Hargis Buena Vista  
Jennifer Wickboldt Indian Valley  
Paula Shaw Murwood  
Tim Cochrane Parkmead  
Dina Walsh Walnut Heights  
Dana Carrigan & Kathy Hill WCI  
Deirdre Hannigan Las Lomas HS  
SCHOOL SITE LIASIONS

Emily Schardt  
EXECUTIVE DIRECTOR

Lorraine Souder  
DATA MANAGER

Joanne Neuman  
BUSINESS CAMPAIGN DIRECTOR

Board of Directors 2007/2008

Cindy Abramson  
INTELLI-SERVICES

Tim Argenti  
CHAIRMAN, ALLIED WASTE

Kathy Coppersmith  
COMMUNITY MEMBER

Scott Ellis  
COLLIER'S INTERNATIONAL

Susie Hanson  
PAST PRESIDENT, WCEF

Kathy Hicks  
COMMUNITY MEMBER

Jennifer Moffatt  
MECHANICS BANK

Debbie Nordstrom  
CONTRA COSTA TIMES

Barbara Pennington  
WCSD GOVERNING BOARD MEMBER

Sharon Rubens  
CPA, RUBENS NUNNEMAKER LLP

Rob Stankus  
ROBERT ANTHONY STRATEGIC  
MARKETING AND DESIGN

Tom Terrill  
PAST PRESIDENT, WCEF  
THE TERRILL COMPANY;

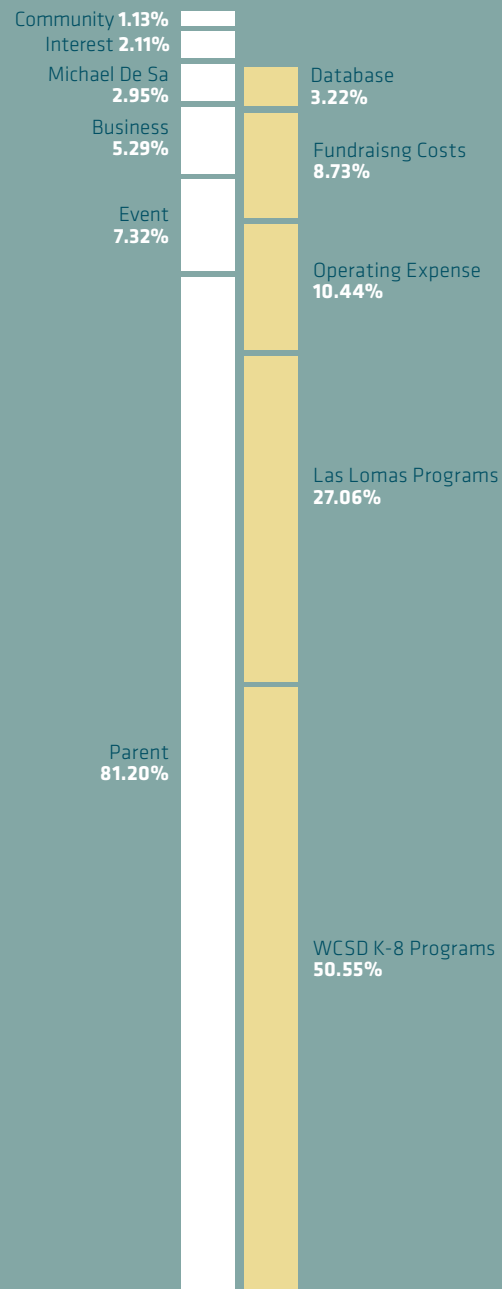
Pat Lickiss  
ADVISORY MEMBER  
PRINCIPAL, LAS LOMAS HIGH SCHOOL,

Jim Negri  
ADVISORY MEMBER  
SUPERINTENDENT, ACALANES  
UNION HIGH SCHOOL DISTRICT

Patricia A. Wool  
ADVISORY MEMBER  
SUPERINTENDENT, WALNUT CREEK  
SCHOOL DISTRICT

2006-2007

Income/Expenses



Raising funds to provide a quality education for our children involves a collaborative effort. Donations are received from parents, businesses, and the community of non parent members including teachers and our neighbors. In addition, WCEF received in-kind donation in excess of \$71,000. This included such things as graphic design, advertising and printing. These in-kind donations further enabled the Foundation to provide needed funding directly to the schools.

**Income**  
Total \$680,816

Parent & Community	\$562,136
Events	\$47,684
Business Sponsorships	\$36,150
Michael De Sa	\$20,300
Interest	\$12,253
Other	\$2,293

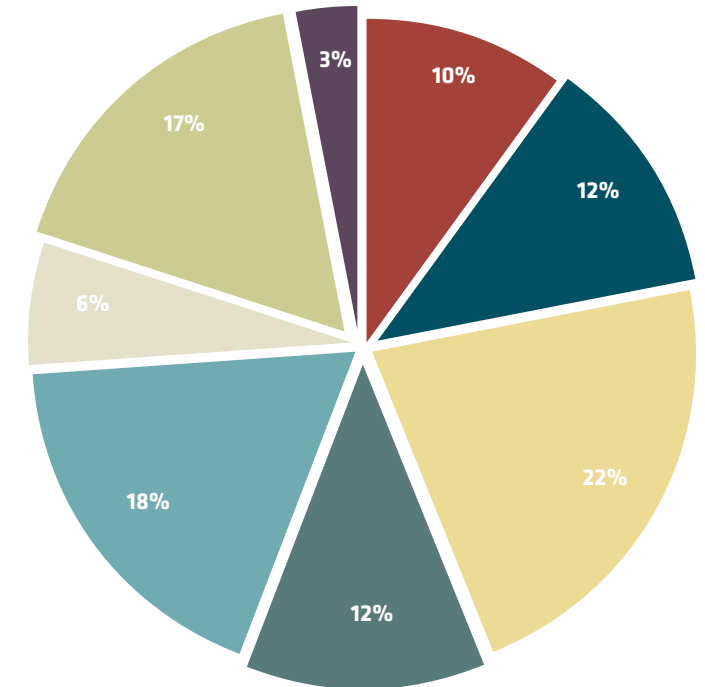
**Expenses**  
Total \$651,462

WCSK K-8 Programs	\$332,000
Las Lomas 9-12 Programs	\$177,723
Operating Expense	\$63,650
Fundraising/Events Costs (COGS)	\$56,936
Database	\$21,153

2007-2008 Budgeted Program Spending

Total \$622,525

- Academic Improvement
- Art
- Health & Safety
- Music
- Technology
- P.E.
- Student Wellness
- Other



Walnut Creek School District Elementary (K - 5)

Roving Substitutes to support Art, Music, P.E.	\$42,000
Art, Music, and P.E.	\$278,000
<b>Total</b>	<b>\$320,000</b>

Walnut Creek Intermediate (6 - 8)

Health & Safety	\$1,500
Art and Music Supplies	\$5,000
6th Grade Orientation Assemblies	\$7,000
Homework Improvement	\$9,500
Visiting Artist Program	\$10,500
Campus Safety	\$26,000
<b>Total</b>	<b>\$93,000</b>

Las Lomas High School (9 - 12)

Career Center	\$1,500
Safe School Ambassador	\$5,000
Science Supplies	\$10,000
Academic Decathlon	\$10,000
Campus Improvement	\$10,000
Computer Lab Assistant	\$11,000
Instructional Materials	\$20,000
Grants to Teachers	\$20,000
Crisis Counselor	\$25,000
Technology	\$50,000
Music Foundation	\$7,200
PTSA	\$8,625
Associate Student Body	\$9,600
Booster Club	\$21,600
<b>Total</b>	<b>\$209,525</b>

**CHAMPION PARTNERS**

Minuteman Press of Lafayette  
 Robert Anthony Strategic Marketing and Design  
 Safeway  
 Studio Blue Digital Print and Copy

**GOLD PARTNERS**

Allied Waste  
 Broadway Plaza  
 Contra Costa Times  
 David Schliemer DMD  
 Diablo Publications  
 James Brian Studios  
 Walnut Creek Magazine  
 Whole Foods Market

**PREMIER PARTNERS**

Blake's  
 Colliers/CAG  
 Fidelity Investments  
 Focus on You Photography  
 Jessany Photography  
 Pacific Rim Recycling  
 Antonia & Steve Quanstrom (J. Rockliff Realtors)  
 Wine Thieves  
 City National Bank  
 Comcast

It is very likely that your employer has a corporate matching program and we encourage you to take advantage of it! You can check with your Human Resources department to find out. We have a partial list of employers with matching programs on our web site. If you don't see your employer, be sure to ask your HR department.

**FRIENDS**

A.G. Edwards  
 BH Development  
 D. Hill Construction  
 John Muir Health  
 Kelly Paper  
 Piedmont Lumber  
 Rubens Nunnemaker LLP, CPA  
 The Terrill Company  
 Tin's Tea House  
 Walnut Creek Downtown Business Association

**SUPPORTERS**

AAA Travel  
 Appliance Doctor  
 Attunement Massage  
 Butterfly Life  
 Kitchen Table  
 Lennox Homes  
 Peregrine Lending  
 Quality Funding, Brian Conner  
 Suzanne Masella, Pacific Union Real Estate  
 Symmetry Health Partner, Mike Sondel  
 Creative Listening Center  
 Sycamore Associates

**CONTRIBUTORS**

Action Video  
 All Valley Home Care  
 Bonanza Books  
 Civic Arts  
 Force Flow  
 Charles Hanson, M.D.  
 J. Miller Flowers & Gifts  
 Kelly & Assoc. LLP  
 KKDV, 92.1  
 Peacock Construction  
 Rainbow Tots  
 Savory Affairs  
 State Farm Insurance, Joe Cilenti  
 Sunrise Bistro  
 Unison Properties  
 Walnut Creek Pediatric Dentistry  
 Dale Kaumans, DDS.  
 Walnut Creek Toyota

Abbott Laboratories  
 Aetna  
 AIG  
 Amgen  
 Bank of America  
 Barclays Global  
 Blue Cross  
 Bowles & Verna  
 Bristol-Myers Squibb  
 Charles Schwab  
 Chevron  
 Cisco Systems  
 Electronic Arts (EA)  
 Elephant Pharmacy

Gap  
 Genentech  
 Gerson Bakar Foundation  
 Grantham, Mayo, Van Otterloo/ GMO  
 Heffernan Insurance Brokers  
 Housatonic Partners  
 Levi Strauss Foundation  
 McKesson  
 Microsoft  
 Motorola  
 Novartis  
 Olympus America  
 Oracle

PG&E Corporation Foundation  
 Reynolds & Brown  
 SAP  
 Sentry Insurance  
 Sun Microsystems Foundations  
 Thompson West  
 Toyota Motor corp  
 UBS  
 Union Bank  
 Verizon  
 Visa Inc.  
 Wachovia  
 Washington Mutual  
 Wellpoint  
 Wells Fargo Matching

## Parents

Imad Abed-Al-Rahim & Ruba Abu-Dahab  
 Haron & Kim Abrahimi  
 Cindy & Lee Abramson  
 Andrea Laird & Scott Achelis  
 Frank & Loren Acuña  
 John Adam  
 Tina & Tom Adams  
 Jim Adams & Marianne McBride  
 Lesly & Mark Adams  
 Duane & Jeanine Adcox  
 Kurt & Shari Adkins  
 Masoud & Minoof Afkari  
 Behnam & Silvia Afshar  
 Jodi & Mac Akin  
 James Akridge  
 Angela Alagna  
 Barbara & Kevin Albaugh  
 Elizabeth & Kenneth Rosenberg  
 Joseph & Marina Albuquerque  
 Dave Aldape  
 Suzette Alday & Pierre Zuñiga  
 Carl & JoAnn Alioto  
 Mitchell Allen & Vida Prater  
 David & Melodi Alltop  
 Waleed Alrawi & Tara Fikrat  
 Angie & Joe Amaro  
 Chris & Rich Ambrosini  
 Nicole & Will Amen  
 Hillary & Rene Amescua  
 Pam & Peter Andersen  
 Renee Day & Mitch  
 Richard Angelis & Karen Hershenson  
 Lisa & Ted Angus  
 Alexander & Mary Anoufrieu  
 Gale & Stuart Appley  
 Deborah Moss  
 Francisco Armero & Cristina Restrepo  
 Cathy & Jeff Armstrong  
 Gloria & Harkin Lucero  
 Lonnie Arroyo  
 Lowell Berry Foundation  
 Kim & John Asher  
 Nancy Asmus  
 Beatriz & Boshra Athanasios  
 Leslie & Steve Atwater  
 Margli & Philippe Auclair  
 Kim Austin  
 Carol & Ken Axe  
 Jeri & John Aylward  
 Diana & Ray Baaba  
 Florangel Bahrami  
 David & Dayna Bain  
 Chuck & Dawn Baird  
 Andrea & Louis Baldacci  
 Jane & Michael Balg  
 Francine Ball & Chris Jones  
 Larry & Margy Banfield  
 Ana Balderrama & Robert Banister  
 Alexander & Marilou Bannon

Dave & Vickie Barker  
 Cheryl Miller  
 Cindee La Joure  
 Kevin Barnett & Alison Negrin  
 Elaine & Tim Barnum  
 Cela & Hugo Barron  
 Peter & Susan Barry  
 Dana & Michael Barry  
 Monica & Shane Bartling  
 Nancy Bartman  
 Greg & Joanne Bartow  
 Mark & Sharon Bass  
 Carmit Bat-Shalom  
 Ron Bauer & Molly Giannini-Bauer  
 Fidelity Charitable Gift Fund  
 Heidi & Erik Bauermeister  
 Karina & Rose Bautista  
 Caedmon & Kathryn Bear  
 DeAnna & Randy Beasley  
 Brice & Colleen Beck  
 Mirna Medina  
 Mary Beth & Wilfred Beijers  
 Anna & Shervin Sarbaz  
 Kathy & Kurt Bellows  
 Bonnie Benaroya  
 Anthony Campana  
 Mike Benko  
 Alias & Geena Benoy  
 Rae & Tom Shimizu  
 Gabriela & Jean Berevoescu  
 Matt & Maureen Bergamini  
 Charmaine Berry  
 Dianne Berkich  
 Ellie Bernstein  
 Mary Jean & Randy Besecker  
 Mirsala Besirovic  
 Liz & Robert Bettis  
 Ann & John Bevan  
 Dane & Susan Bigham  
 Rick Bikoff & Rose Strogatz  
 Ellen & Rick Bill  
 Bertha & Philip Bird  
 Kerry & Mike Blachly  
 Belinda & Jim Blair  
 Blank, Michele  
 Brad Bode  
 Dan & Ileana Boeriu  
 Piotr & Wioletta Bojanowski  
 John & Susan Bomba  
 Ben Bond  
 David Bond  
 Terri Wilde & Charles Boneck  
 Carolyn & William Boord  
 Liz & Stu Booth  
 Mary & Matt Boozer  
 Chris & John Boral  
 Angela & Mark Borchardt  
 Anna & Don Borden  
 Ned & Sharon Borglin

Irene & Ron Bossert  
 Rosalind Boukis  
 Bert & Glenda Bouler  
 Kristina Bourdeau & Chris Hernikl  
 Elizabeth & James Bourell  
 Charlie & Penelope Bowden  
 Daryl & Shannon Bowers  
 Victoria Roberts-Bowles  
 Bo & Melinda Boxold  
 Bill Bozym & Toni Steil-Bozym  
 Juan Bracamontes & Estela Olivarez  
 Elizabeth King-Brand  
 Joe & Nancy Branka  
 Dan & Vera Braswell  
 Mike & Traci Brazil  
 Dennis & Erica Breen  
 Cheryl & T. Anthony Breen  
 Lindy & Sam Brenes  
 Jim Brennan & Jane Burton  
 Barb & Bob Brensel  
 Betsy & Peter Breunig  
 Nancy Brightman  
 Iris & Patrick Brindle  
 Karen & Bob Britz  
 Dimitry & Melanie Brodskiy  
 Mark & Mary Brody  
 Penny Brody  
 John & Susan Brogdon  
 Kathy & Ken Brokaw  
 Stacie Scammell  
 Jhonna Llamoso-White & Mark White  
 Bonnie & Todd Brookhart  
 Angela & Roger Brothers  
 Dave Brown & Lynn Prebil Brown  
 Richard & Victoria Brown  
 Dana & Tom Brown  
 Scott Brown  
 Maggi Brown  
 Cedric & Ruth Brown  
 Britt & Tom Brown  
 Kaz Gozdz & Wendy Wiegand  
 Greg Brown & Rita Zigas-Brown  
 Denise & Jeff Antoon  
 Vlad Bruk & Larisa Kleyman  
 Melanie & Robert Brunner  
 Diana & Mark Bryggman  
 Christa Buckingham  
 Gary Buffo & Kimberly Everett  
 Dean Bullert  
 Gwen & Jonathan Burchett  
 Eric & Nancy Burk  
 Bob & Theresa Burke  
 Robbie Burns & Margo Jacobsen  
 Brent & Kim Burns  
 Christopher & Judy Burton  
 John & Lori Burton  
 James Ferguson  
 Gary & Linda Busbee  
 Jill & John Buschini

## Parents, continued

Becky Busi & Steve Holmes  
 Gregory & Tina Butler  
 Inna & Leonid Bykov  
 Theresa Cabral  
 Hui Cai & Saier Shen  
 Denise & Jay Caldwell  
 Lisa Caldwell  
 Ana Lopez  
 Colleen & John Campagna  
 Carl & Gloria Campos  
 Nenita Caneja  
 Lou & Susan Cappel  
 Michelle Carlson  
 Jamey Carman  
 David & Mary Claire Caron  
 Cris & Dana Carrigan  
 Margo & Peter Carroll  
 Deb & Nigel Carter  
 Karen & Tim Carter  
 Joseph Caruso  
 Maria Arias & Miguel Castro  
 Jackie & John Cate  
 Michelle Cathcart  
 Dr. Stevan Cavalier & Stephany Cavalier Houghton  
 Anthony Cavotta & Leslie Fitzgibbons  
 Heather & Marcel Cedermaaz  
 Cynthia & Tony Cerdan  
 Stacy Cerruti  
 Jacqueline & Michael Chan  
 Andrew & Susan Chandler  
 Beth & Paul Chastain  
 Sameer & Sangeeta Chaubal  
 Joyce Taylor  
 Allison & Mitch Che  
 George & Linda Chen  
 Carl & Catherine Chenault  
 Christine Chiang  
 Patricia & Wah Cheong  
 Joseph & Joyce Cho  
 Kit & Van Chow  
 Frank & Virginia Choy  
 Connie & Jeffrey Chung  
 Dan Cifelli  
 Linda Clar  
 Robert Van Hulle  
 Joanne Clarke  
 Diane Clement  
 Kim Dressel-Ramirez  
 Sheryl & Tim Cochrane  
 Alison & Paul Cocotis  
 Janet & Josh Cohen  
 Donna Colabianchi & Jon Robinson  
 Jay & Mary Colas  
 John & Robineve Cole  
 Bernard & Caroline Cole  
 Floyd & Rhonda Coleman  
 Marianne Coleman  
 Peter & Susie Colombo  
 Ann Barrett & Pete Coney

Patti Coney & Tim Tyler  
 Chris & Kelley Conlon  
 Penny & Todd Conway  
 Jason & Kim Cooke  
 Carolyn & David Cool  
 Arthur & Laura Coon  
 Diane Coppa  
 Alex & Raquel Coppersmith  
 Candace Buchanan & Steve Corbett  
 Doris & Mario Cordova  
 Charles Corich & Jane Yuen-Corich  
 Julie Cornell  
 Mindy & Perry Cortessis  
 Rebecca Peña  
 Ramona Coutinho  
 Bob & Eileen Cowden  
 Glynis & John Cowdery  
 Erin & James Cox  
 Karol & Kevin Coyne  
 Libby Craig & Felix Karim  
 David & Kim Crane  
 Mary & Vincent Crinnion  
 Jim & Linda Crisolo  
 Marjie & Steve Curry  
 Jackie & Randy Curtis  
 Dorothy Kulp  
 Christy & Luis da Silva  
 Maria Dage-Evans & Tom Evans  
 Janet & Robert Dahlstrom  
 Katy Conrad  
 Darlene & Mark Daley  
 Carol D'Alo  
 John & Sharmine Danpour  
 Cindy & Gary Darling  
 Christine & Chris Davenport  
 Katie & Scott Davis  
 Aaron & Donna Davis  
 Jennifer & Peter Davison  
 Barbara & Michael Day  
 Michael De Sa  
 Jerry Breen & Stephanie Dean  
 Michele Deflippo  
 Carla & Mehran Dehdari-Dris  
 Maggie O'Hearn  
 Angela & Michael DeLaHousaye  
 Ruth & Steve Gonsalves  
 Brian & Molly Delaporta  
 Moe & Siobhan Delfani  
 Nichole Delp  
 Andrei & Irina Dencic  
 Alison & Pierre Denis  
 Kerri & Scott Denison  
 Julia & Tom Denniston  
 Andrea & Marc Desin  
 Donna & Rob DeSino  
 Suzette & Nick Dewan  
 Angela & Marty Dewey  
 Kristen & Pritam Dhaliwal  
 Elisa González

Adrian & Candice Diaz  
 Alvina Diaz  
 Erica & Scott Dickinson  
 Steve Didion  
 Bill & Nellie Dimalanta  
 Chris & Dan Dimmick  
 Alex & Irina Dmitrishina  
 Peggy & Phil Dodds  
 Ron & Sun Mi Dollinger  
 Mike & Sally Domingo  
 Jim & Roberta Hettel  
 Alexa Donahoe  
 Byron Done  
 Bob & Patty Donnelly  
 Christine & Kevin Donohoe  
 Gordon & Jane Doran  
 Linda & Steve Dorn  
 Michelle & Thomas Dorrance  
 Mike & Nancy Dougherty  
 Colleen & Kevin Dowd  
 Marsha Zimmerman  
 Bryan & Susan Draper  
 Bruce & Jill Dresser  
 John & Vicki Drury  
 Katherine Duff  
 Bill & James Duffy  
 Cheri Dumont  
 Heather Duncan  
 Lura Duncan  
 Brian & Nancy Duncan  
 Bob & Wendy Duncan  
 Kathy Dunne & Michael Vecchio  
 Akram & Nasser Duzdazani  
 Lisa Edgar  
 Erik Edmiston  
 Greg & Marcia Eiler  
 Janine Ellis  
 Ellen & Stephen Ellis  
 Julie Ellis  
 Bruce & Mindy Ellison  
 Christine & Steven Elsasser  
 Lisa & Randy Schacht  
 James & Mai Engel  
 Martin & Trisha Engelmann  
 Jantsan Baasan & Dorj Enkhmandakh  
 Elizabeth & Shelton Ensley  
 Christeen Era  
 Frank & Wendelyn Erazo  
 Helen Erickson  
 Tim Erickson  
 Barbara & John Erickson  
 Don & Patti Ernst  
 Peymaneh & Sohrab Esfandiari  
 Jon & Randi Esmay  
 Colleen Murray  
 Mark Evans  
 Paul & Renae Extrum-Fernandez  
 Laurie & Michael Fannin  
 John & Luisa Farquhar

## Parents, continued

David & Valerie Farrell  
 Dan & Kathy Farwell  
 Anthony & Elaine Fashana  
 Tatyana Fedorova  
 Mary & Paul Fehrstrom  
 Ian & Jan Fellerman  
 Mun Ha Lee  
 Ginnie & Jamie Ferranti  
 Martin Ferreira  
 Brenda Santos  
 Laura & Robert Fess  
 Diane & Jim Fidelibus  
 Kurt & Lori Fieldhouse  
 Bob & Helen Figone  
 Ibrahim Aydin & Yelizaveta Filipovich  
 Mark & Maureen Finch  
 Terry Byrnes & John Finger  
 Allen & Susan Fischer  
 Jerry Fisher & Kit Niemeyer  
 Annette & Craig Fisherkeller  
 Cliff & Susan Fitterer  
 Bethanne & Sean Flannery  
 Kendall Fleck  
 Fred Flint  
 Chip & Denise Flor  
 Kathy & Steve Florence  
 Edward & Ann Flynn  
 Susan Foley  
 Bobby Fong  
 Jim & Terry Fong  
 Jim & Mary Forbes  
 Khemphet & Ted Ford  
 Elise Fornaci  
 Brinda Forrest  
 Alison Sylvia  
 Jane & Rob Fowler  
 Jim & Kim Fox  
 Jim Fox  
 Richard & Sheri Fox  
 Susan Fox  
 Adam & Dana Fragen  
 Matthew & Samantha Francois  
 Curt & Linda Frandsen  
 Michael & Rodina Frederick  
 Catherine & Steve Freemire  
 Clark & Jenni Frentzen  
 Adrian Frias  
 Michael Fricklas  
 Debi Silverman  
 Jeff & Shannon Fritschi  
 Ian & Sherilyn Fry  
 Jennifer & Rick Fulks  
 Kathy & Patrick Fuller  
 Douglas & Lora Fults  
 Judith & Kevin Gabie  
 Jeff & Sue Galanti  
 Christopher & Maria Gan  
 Aleta & Ruben Ganancial  
 Edward & Nese Ganch  
 Diane & Stuart Garb  
 John & Susie Gardenal  
 John & Susana Gardner  
 Catherine & Chris Gardner  
 Glen & Mary Garfein  
 Annie & Mike Garmon  
 Bob & Suzanne Garrett  
 Heidi & Steven Garske  
 Toni Gaumann  
 Rozan Gautier  
 Kamala Gaxiola  
 Charles Gebhardt & Kathy Newman  
 Janet & Norman Gee  
 Miranda Baghashvili  
 Ruth Gebrowolde  
 Phyllis Genzoli  
 David & Melissa Gerber  
 John & Susan Gertz  
 Matthew Gheisari & Mojgan Shahbazi  
 Linda Ghsyels  
 Cathleen Rae Giannicola  
 Jeff & Julie Gibson  
 Don & Dorothy Gieseke  
 Holley & Scott Giesman  
 Jeff & Shelley Gillett  
 Jill Gillis  
 George & Laurie Gilmore  
 Robert & Suzette Gindt  
 Steven Gingerelli  
 Chris Giotta  
 Freda Giusti  
 Janis & Niels Glaser  
 Michael & Mimi Glass  
 Hilary & Rich Glass  
 Donna & James Glassford  
 Hallie Glover  
 Trish Godley  
 Elina & Vlad Goldman  
 Sam Goldstein & Barbara Silverman  
 Lucy Orel  
 Cecilia Naranjo  
 Michelle & Rick Good  
 Sandra & Terrence Goodell  
 Lyn Goodness  
 Laurie & Peter Goodwin  
 Aleksandra & Konstantin Gordiyenko  
 Barry & Niki Gordon  
 Jenifer & Richard Gorton  
 David & Susan Gossage  
 Glenn & Marci Gould  
 Steve Coulet  
 Larry & Nancy Grabow  
 Clifford & Deborah Graffuis  
 Maureen & Patrick Grant  
 Cynthia & Rick Green  
 Bob & Lori Green  
 Kevin & Kristine Greene  
 Richard Greenstone & Ramsey Moreau  
 David & Margaret Greer

Glenn & Linda Gregersen  
 Hellen & Phillip Gregory  
 Edward & Ellie Grenville  
 Jeanette & Steve Gross  
 Linda Clark & Brian Grossmann  
 Lauren Grove  
 Joel Grube & Kathleen Kearney  
 Kenneth & Kim Gruber  
 Christa & Michael Gruener  
 Debbi & Kevin Gubbins  
 Alfonso Espejo & Claudia Guerrero  
 Amber & Ivan Guerrero  
 Maritza & Paul Guitron  
 Komal & Rohitraj Gurung  
 Maria & Victor Guzman  
 Scott & Taun Hall  
 Cindy Hall  
 Jorn & Mary Halle  
 Jim & Suzanne Haman  
 Sohaila Ebrat & Ghani Hamid  
 Jim & Marilyn Hampton  
 David & Janet Hanks  
 Gail Hannigan  
 Harvey & Nora Hanoian  
 Glenn & Tonya Hansen  
 Anna & Bill Hanson  
 Dr. Charles & Susie Hanson  
 Heather Cattell  
 David Harder  
 Bob Hardy  
 Sara Hare & Uwe Settegast  
 Shannon & Tim Hargis  
 Sherry Harkins  
 Danny & Dina Bennett & Jeanette Bruno  
 Jennifer Lee  
 Dean & Mary Ann Harper  
 Vivian Huggins  
 Kim & Ron Harrison  
 Janet & Mike Way  
 Michelle & Mike Hart  
 Daniel Hartwig  
 Harold & Jean Harwood  
 April & Mike Hatfield  
 Wendy Hatlelid  
 Greg & Tracey Haught  
 Paul Hawthorne & Carol Seermann  
 David & Jan Heaton  
 Eric & Jill Hedgecock  
 Ann Hein  
 Peter Hendricks  
 Kelly & Matt Hendricks  
 Joseph & Lorna Henri  
 Diane Swanson  
 Mary Dockter & Thomas Henry  
 Tamara Henry & Susan Kruck  
 Chris & Laurel Londahl  
 Craig & Deborah Hermann  
 Cora & Manuel Hermoso  
 Joanne & Mario Hernandez

## Parents, continued

Deborah & Phil Herndon  
 Helen & Nick Herrera  
 Terry Herringshaw & Pattie McNamee  
 Jackie & Jim Hershey  
 Angie & Scott Higgins  
 Doriot & Kathy Hill  
 Andrea & Brad Hilsabeck  
 Don & Stacey Hinton  
 Michelle & Robert Hitomi  
 Maile & Norman Ho  
 Dave & JoAnn Hobbs  
 Darrel & Michele Hodge  
 Craig Hodges & Lucinda Jackson  
 Chris Hoff  
 Katharina & Stefan Hofstadter  
 Marianne Hook  
 Kristi & Ron Hogan  
 Jacky & Peter Holbrook  
 Kimberley & Ted Holeman  
 Brian & Shannon Holland  
 Adina & Ron Holland  
 Donald & Roxanne Holm  
 Jenevieve Holman  
 Nancy Brenner & Michael Holmes  
 Eric & Mary Holzheimer  
 Hayden & Kim Homes  
 Kevin Honey  
 Carol Martin & Sharon Solstice  
 Kwon & Susie Hong  
 Richard & Roxie Hooke  
 Christine & Edward Horley  
 Vicki Horn  
 Cliff & Melissa Horner  
 Jeff & Trina Horner  
 Chris & David Hosley  
 Beth & Joe Houghton  
 Brenda Bly-Hourihan & John Hourihan  
 Cathy & Les Howard  
 Elinor Axup & Steve Howard  
 Hadwen "Barney" & Stacy Howard  
 Hollie Howell  
 Perrin & Sarah Howell  
 Lisa & Roxanne Huey  
 David & Emmy Yu Hui  
 Peter & Sidney Hulin  
 Campbell & Nancy Hunter  
 Brendan Hurd  
 Marie Cooper  
 Caroline Wang  
 Joy Inouye  
 Xavier Irias  
 Donna & Peter Irving  
 Anjelka Ivanova & Louri Ivanov  
 Roni & Steve Jacknow  
 Tasha Armstead  
 Alan & Jill Jacobson  
 Andre & Carol James  
 Mike Jameson  
 Debbie & John Jamieson

Alejandro Jasso  
 Kay & Steve Carzoli  
 Christine L. Jernigan  
 Mary Ann & Vincent Jervis  
 Linda Jess & Laura Neilley  
 Anchee Min  
 Luis & Patrice Jimenez  
 Aileen Feraren & Zackary Johns  
 Sharon Letter  
 Jon-Michael & Kristin Johnson  
 Carol & Ron Johnson  
 Kristen & Rob Johnson  
 Nancy & Ronald Johnson  
 Brett & Kymberly Johnson  
 Patty & Robert Johnson  
 Carolyn Johnson  
 Dave & Jennifer Johnston  
 Ann & Douglas Johnston  
 Anne Jones  
 Chris Jones & Melissa Stafford Jones  
 John & Shannan Jones  
 George & Kerry Joost  
 Janice Crooks & Bob Jorgensen  
 Justine Faisst & Charlie Joyce  
 Andrew & Hsiu-Hua Kaczmarczyk  
 Gene & Michelle Kahn  
 Peggy & Randy Kahrer  
 Melissa Brint  
 Rachel Taketa  
 LuAnn & Tom Kane  
 Jeanne & Peter Kaplan  
 Alan & Casey Kaplan  
 Emily & Greg Karakashian  
 George & Lana Kassab  
 Mary & Rick Kastner  
 Cynthia Graves  
 Nina & Efim Katz  
 Janet & Rob Katzer  
 Daniel & Lisa Katzki  
 Doug Kawabata & Marlene Yamashita  
 Doug Kawabata & Marlene Yamashita  
 Michael & Nancy Kaye  
 Jill Keeler  
 Jody Keisling  
 Andie & Scott Keith  
 Karin & Steve Kelley  
 Deirdre Gaynor & David Nied  
 Brian & Lupe Kemper  
 Cherie & Steve Kenny  
 Virginia Hamilton & David Kent  
 Olivier Keratret & Eva Santelli  
 Dee & Ken Kerkhoff  
 Holly & Jeff Kerl  
 Anthony & Pam Kessler  
 Karyn & Mike Kessler  
 Alex & Inessa Khodorenko  
 Kateryna Khrakovska & Yuri Khrakovsky  
 Charan Kilbourn  
 Heidi & Rob Killoran

Natalie Kilner  
 Seol & Soong Kim  
 Haleh & Paul Kimelman  
 Bea & Mike Kimsal  
 Sandy Galganski & Todd Kindorf  
 Jamie & Kurt King  
 David & Dinah King  
 Bill & Dixie King  
 Kevin King  
 Brooke & Krishna King  
 Roger & Sally Kingdon  
 Krissy & Shawn Kinnear  
 Jaylene & Paul Kinni  
 Janet Kirkpatrick  
 Brian & Candace Kirmse  
 Christian & Micheline Kirsebom  
 Kevin & Susan Kleespies  
 Jan Knight  
 Kim & Ron Knight  
 Kathy & Kirk Kniss  
 Ken & Tina Knox  
 Mia Rodriguez  
 Haruko & Kevin Kodama  
 Alison & Michael Kofford  
 Ken & Myrna Kohl  
 Stanley & Suzanne Kolodzie  
 Rod Bacon & Masako Kondo-Bacon  
 Casey & Dino Konrai  
 Kopel Alexandria  
 Nikolay Korolev & Svetlana Koroleva  
 Alma Kort  
 Vasilij Kosenko & Olena Turchina  
 Taryn Niland  
 Jenna & Keith Kroom  
 Laura Halpin & Chris Krueger  
 Julie Krug  
 Anabelle & Joseph Krupa  
 Martina & Mel Kukuljevic  
 Tuyana Efimova & Vitaly Kupisk  
 Elizabeth & Steve Kwak  
 Henry & Jenny Kwok  
 Michelle R La Honta  
 Jack & Jennie La Salle  
 Allyson & Michael Lachman  
 Joan Anderton & John Laettner  
 Katrina & Richard Lambert  
 Karen Lanfrank  
 Steven & Tanya Lang  
 Dianna & Ron Langer  
 Eric Balmy & Loretta Dunncarter  
 Julie & Steve Langley  
 Francoise & Gregg Langlois  
 Wilfredo Laredo & Evelina Martins-Laredo  
 Blake & Shelly Larkin  
 Linda & Robert Larsen  
 Davin Larson & Tracy Wonnell  
 Alice & Richard Lasky  
 Jeremy & Jodi Lassetter  
 Heather & RJ Lavallee

## Parents, continued

Elliott & Marcia Lavey  
Arthur & Ava Law  
Barbara & Steve Lawler  
James & Sharon Lawrence  
Brandon & Kim Lawrence  
Terry Lawson  
Hoang Le & Doan Nga  
Brett & Donna Leach  
Sergey & Svetlana Lebedeva  
Gunilla & Jack Lehmkuhl  
Gilma & Juan Lehnhoff  
Ed & Mary Leiken  
Jeff & Roisheen Leinen  
Jose Leiva  
David & Rochelle Lenahan  
Adrienne & Jim Totah  
Lay-Hoon (Doline) Lee & Khai Leong  
Heather Leslie  
Catherine & David Leutzinger  
Marina Levitskaya & Sergey Levitskiy  
Jeff Levy  
Heloise & Michael Levy  
Beth & Joe Lewis  
Nancy Carmody  
Sarah & Steve Lewis  
Jian Ping Gao & Yi Wei Li  
Jane & Joshua Li  
Michael & Rachel Li  
Jeanine Ibarra & Pedro Licon  
Sarah Gosling & Stuart Lieblich  
Leo & Marie Lin  
Jim & Kerry Lincoln  
Howard Lind & Patty Morris  
Bernard & Jackie Lindh  
Bill & Meg Lindsay  
Dan & Debbie Lindstrom  
Helen Linister  
Paure & Ray Liou  
Matthew & Tiffany Lipelt  
Tom Liu & Connie Zhao  
Louis Liu & Cindy Yuan  
Nanette & Terry Wong  
Kari & Kevin Lockey  
Tami & Tom Lonzo  
Brenda & Phillip Lopes  
Jo Lopez  
Mark Lopez  
Rhett Bratt & Dawn Lopshire  
Dennis & Sharon Lore  
Carmen Gomez  
Adam & Monika Love  
Ami & Jeff Loventhal  
Sheldon Low & Mary Russell  
Karen & Thomas Low  
Jim Lubman  
David & Joan Lucchese  
Christopher & Venus Lugos  
Jackie & Roger Luman  
Janice Lund

Heather & Richard Lund  
Debbie & Steve Lundgren  
Deborah & Toby Lustig  
Ann & Stuart Lutzker  
Wendy Lyn  
Eleanor & Matthew Lyon  
Edward Ma  
Renee & Ronald Macarthur  
David & Elizabeth Mackey  
Mimi Cline & Robert Mackinlay  
Joe & Sarah Mackle  
Betty Maddox  
Chuck & Debbie Madrid  
Janice & Mark Madsen  
Alan & Renee Maeda  
Barbara & Douglas Magoon  
Maureen & Miler Magrath  
Aimee & Pravin Mahabir  
Jim & Lisa Maher  
Stephen Maier & Nanette Winterfelt  
Frank & Katie Maiuri  
Leland Maker  
Jim & Lindy Mallon  
Gary & Marcia Malmgren  
Karen & Mike Mancusi  
Laura & Robert Maneggio  
Steve & Susan Mann  
Marguerite & Marlo Manqueros  
Bernie & Rosemary Mark  
Sara Brown  
Barbara Marks  
Leslie Marquardt  
Bruce Marr  
Greg & Karen Marriner  
Bill Denyer  
Joanne Martens  
Lisa & Michael Martin  
Jeff & Julie Martin  
Paul & Susie Martin  
Teri Leichenger & David Marton  
John & Suzanne Masella  
Amy & Steve Masterson  
Mike & Teri Mathers  
Alan & Denise Mathews  
Allison & Jim Mathews  
Norman Matloff & Gamis Yu  
Douglas & Sylvia Matthew  
Cathy & Gordon Mauger  
Nora Humphreys & Richard May  
Jorge & Maria Mayol  
Judy Mazur  
Kathie Langstaff  
Tom Anderson & Sarah McCarthy  
Eric McCartney  
Jeff & Vicki McCaslin  
Diane McClelland  
Debbie & Scott McCommon  
Elizabeth & Kelly McCormick  
Dale & Marilou McDonald

John & Loraine McDonald  
Matt & Shelly McGill  
Kelly Mcginnis  
Pete & Sherri McGoff  
Christine & Neil McGovern  
Diane & Thomas McGovern  
Carolyn & Craig McIntosh  
Bruce & Lydia McIntosh  
Char & Dave Goodman  
Tom McKillop  
Craig & Dana McLeod  
Karen McLucas  
Dan & Mary McMillan  
Dana Murphy  
Dominic & Eileen Mcnaughton  
Brian & Nancy McWeeney  
Ginger & John Megley  
Linda & Steven Mehlman  
B.J. & Brett Mehringer  
Joseph & Monica Mele  
Ashiat Ashiat & Gul Muhammad  
Liz & Rich Menar  
Darryl Holcombe  
Liz Menkes  
A. Bibianne Mercurio  
Cathy & Eric Merhoff  
Theresa Michael  
Craig & Kim Michels  
Cathy & John Mickow  
Cindy & Stan Millard  
Steve Bakaley & Marjie Miller  
Bob & Julie Miller  
Janet Milliken  
Maura Millison  
Mike Milne  
Kris & Tom Milner  
Steve Milovich  
Sue Flautt & Steve Mink  
Sue Flautt & Steve Mink  
Nancy & Pravin Mistry  
Wenbin Mo & Xiaofeng Wang  
Carolyn & Don Moeller  
Carolyn & Don Moeller  
Christine & Robert Moench  
Jennifer & John Moffatt  
Azita Bagherli & Hamid Mohseni  
Cathy & Mike Monahan  
Julie & Scott Monasch  
Darvin Hinkle & Donna Monteiro  
Robert & Rusty Moody  
Dennis & Nancy Moore  
Randall & Sharron Moore  
Laura & Mathew Moore  
Faramarz Moradian & Afarin Zolfaghari  
Juan Moreno  
Alma & Sergio Moreno  
Anne & Scott Morgan  
Maelene & Ron Moriguchi  
Lynda & Paul Morris

## Parents, continued

Hamid & Nell Mostowfi  
Edward & Marybeth Moura  
Debra & Brent Mulanax  
Robert Muldoon & Judi Rogul  
Christine & Michael Mulligan  
Lisa & Matt Muniz  
Debi Hull  
Deanna & Jim Murdy  
Leah Eskenazi & Darrell Murray  
Angus & Tricia Murray  
John Musante  
Frank & Sue Tsang Mycroft  
Bruce & Michelle Myers  
Dean Myers & Jill Osur  
Cheryl & Jordan Myers  
Daryn Nabeta & Nicolas Osouf  
Chris & Jeff Naff  
Steve Klein & Galen Samuelson Klein  
Andrea & Mitch Nakagaki  
Kal & Randa Nawawi  
Steve & Tammy Neben  
Karlo & Olivia Nebres  
Leonel Negrete & Maricela Villa  
Diane & Scott Nelson  
Greg & Lynn Nerland  
Gary & Joanne Neuman  
Rolf Neuweiler  
Peggy & Phil Newsom  
Clyde & Mable Ng  
John & Susan Niceley  
Armen Kirakosian & Rita Nichiporuk  
Karen Getman  
Dede & Mark Nieto  
David & Leslie Nilson  
Fredrik & Kahila Nilsson  
David & Kelly Nissim  
Kristina Nixon  
Summer Noel  
Anna & Mike Noii  
Kamran Normani & Farszaneh Sarajzadeh  
Darryl & Linda Nomura  
Antoinette & Larry Norris  
Anne & Lance Nott  
Al & Carina Nyaiesh  
Nyamdagva Davaadorj & Otyonbileg Tseren  
Bob & Erica Oakley  
April & Brian O'Dea  
David & Shelley O'Dell  
Kevin & Pam O'Donnell  
James & Suma O'Farrell  
Sandy Biagi & David Ogden  
Anne O'Gorman  
David & Susan O'Grady  
Kristen & Ron Oliner  
Michelle & Rick Olson  
Janet & Janusz Olszewski  
Irina & Mark Chase  
Bill & Carol O'Neill  
Evangeline & John Ong

Avi & Jacqueline Orenstein  
Marianne Orton  
Heather & John Osborne  
Al & Molly Osgood  
Niamh & Paul O'Shaughnessy  
Ellen & Roger Osmundson  
Hank & Laurel Osuna  
Chris & Dean Ottati  
Greg & Valerie Ow  
Kevin & Nikki Owens  
Pat & Shawna Owens  
Lila Coulter & Tim Procherena  
Harry Pace & Mary Upshaw  
Maria Regina & Randy Pacheco  
Joe & Susanne Paclebar  
Cathy & Vern Padgett  
Max & Roshanak Pakkhoo  
Dale & Linda Palaniuk  
Mary Crisier & Bob Pallarino  
Donald Palmer  
Jana Palmquist  
Michelle & Tom Panacci  
Josephine Brown  
Ron Pangilinan  
Camie & Corey Paparelli  
Anna LaPelle  
Jim & Mary Parsons  
Cynthia & David Pastor  
Chitta & Sonal Basu  
Babu & Sheila Patrose  
Hiroko & Jeff Pauling  
Barbara & Michael Pearl  
Chris & Irv Pearlstein  
Jeffrey & Margo Peckham  
Kelley & Mark Pecoraro  
Anne Pedersen  
Patty & Roger Pell  
Katie & Ray Peña  
Barbara & Tim Pennington  
Amy & Bruce Pennington  
Carlos & Odette Perez  
Cecilio & Merche Perez  
Carolyn & Jeff Mansfield  
Dale & Jeanne Perkins  
Toni Johnson-Silva & John Silva  
Darin & Robin Perry  
Julie & Patrick Persse  
Leslie & Lowell Peters  
Rebecca Hall  
John & Kathleen Peterson  
David & Nancy Peterson  
Mike & Wendy Peterson  
Janet Pfeiffer  
Henry Pham & Thanh Trao  
Pati & Tim Philipps  
Brett & Shelly Pierson  
Pascale Longfellow & David Piethe  
Ron Pilkington  
Heather & James Pineda

David & Melina Platt  
Auben Elliott & Rick Pollack  
Margarita & Sergey Polyakova  
David Port & Billie Warden  
Patrick & Sandra Porter  
Gary & Karen Porter  
Toni Powell  
James & Julie Powell  
Carolyn & Read Powell  
Julie & Mark Powell  
Mary & Joseph Prassinios  
Andrew Noymer & Ndola Prata  
Laurie Prindle  
Maggie Petersen & Ted Priola  
Patrice Jensen & Tom Pruitt  
Antonia & Steve Quanstrom  
Peggy & Perry Quarenghi  
Jaer & Sheila Quijivix  
Jill & Mike Quillin  
Clark & LeAnn Quinn  
Beth & Ed Quintong  
Armando & Tonette Quintong  
Roxann Jacobson & Van Rackages  
Joyce & Jeffrey Radigan  
Maha & Rafat Raie  
Felita Millican & Leslie Rainey  
Krish Kumar & Raja Ponniah  
Robert & Tricia Ramia  
Laura & Miguel Ramirez  
Donna & Todd Rammell  
Claudia & Lou Ramondetta  
Robyn Davis-Ramos & Jesse Ramos  
Francisco Ramos  
Stewart & Vinita Ramsay  
Robin Kokemor Rangel & Arthur Rangel  
Jagdeep & Shashi Dayal  
Doug & LaLani Rapp  
Avi & Dr Nancy Ras  
Deborah & Ray Allen  
Amir & Nadia Rassouli  
Chris Rauber & Kim Williams  
Roger Reaber  
James & Melissa Rease  
Deborah Butterfield  
Clifford & Victoria Redstone  
Harry & Kena Ree  
David & Robin Reese  
Carol Reeves  
Ana & Ken Regalia  
Ronald Renirie & Sarah Wood  
Christine & Dean Revelli  
Bonnie & Stephen Reyes  
Jim & Tanya Reynolds  
Janice & Robert Rich  
Johanne Poulin & James Richards  
Barbara & Roger Richter  
Allison & Michael Ridenhour  
Tim Riordan  
Norma Buss

## Parents, continued

Jan & Ted Robertson  
Lee Robertson  
Harry & Nancy Robey  
David & Rebeca Robins  
Terri Phelps  
Olga Rodkopf  
Eve Cominos & Daniel Roemer  
Janet & Jim Rogers  
Anna & Rafael R. Romero  
Sharon Muhlenkort & Ivan Romero  
Anna & Mikhail Romov  
Jackie Osborne & Mark Rose  
Lauren Rosemont  
Dayle & Phil Ross  
Greg & Kelli Ross  
Jane & Rob Rossi  
Susan Rossi & Page Stoutland  
Alexei Roudnev & Karina Roudneva  
David & Sharon Rubens  
Marcy & Steven Rubin  
Charles & Jane Ruefenacht  
Jeff & Kristen Rulifson  
Andy & Julie Russell  
Gabrielle Levine  
Julie & Larry Russell  
Rob & Trude Rutan  
Daniel & Maurya Ruxin  
Roger Rydinski  
Gayle Rydinski & Cliff Scheffel  
Mikhail & Natalia Sadetsky  
Flora & Hossein Saeedi  
Christina & Jeffrey Saenger  
Debasis Saha & Nina Shetty  
Denise & Peter Salgado  
Jane Martin & Michael Samuel  
Dave & Lori Sanson  
Agnes & Dino Santos  
Lisa & Rod Santos  
Gloriann & Greg Sasser  
Judi Watkins  
Sheeja Sathi & Sathisanl Vannadil  
Terryann Satterfield  
Larry Sauers  
Johnny Oupahat & Chantima Savagatrup  
Edward Savio & Natalie Saylor-Savio  
Bill & Emily Schardt  
Darren & Elizabeth Schleth  
Joann & Mathew Schlinger  
Lu & Mike Schloemer  
Dan & Kelly Schoenberg  
Roberta Reinstein  
Mike Schoenholz & Debbie St. Pierre  
Karen & Matthew Schoenthaler  
Mark & Renita Schon  
Marie Noble & Uwe Schorkopf  
Evelinde & Zolik Schperberg  
Eric & Karen Schroter  
Kathy & Milton Schueler  
Michael & Susan Schwab

Arthur & Wendy Schwartz  
Dave & Stacey Schweppe  
Alan & Kathleen Scott  
Janene & Tom Scovel  
Lisa Aaron & Brian Seamount  
Mary & Ray Seed  
Gene Selkov  
George & Tina Sellers  
Tina Duran & Summit Sen  
Dan & Tracy Seng  
Charlene & Ted Senger  
Dan & Michele Sevilla  
Kiran Kaur  
Mandana & Shawn Shamloo  
Ibrahim & Terri Shamroukh  
Heidi & Paul Shankwiler  
Jerry Shapiro  
Barbara & Randy Thomas  
James Fuller  
Sherrilyn & Thomas Shastid  
Clint & Lisa Shaw  
Lynne Jowett & Roger Shaw  
Paula & Vince Shaw  
Bill & Lisa Shedd  
Karl & Rhonda Rankl  
Diane Seipel Sherard & Philip Sherard  
Randy & Sheryl Sherrod  
Don & Mandy Sherwood  
Chris & Elaine Sherwood  
Peter & Sylvia Shih  
Diana & Mike Shimberg  
Jay & Maria Shkolnikov  
Karl & Virginia Shogren  
Jim & Susan Simmons  
Kelly Lemon & Todd Simonse  
Richard & Rosette Simonton  
Gene & Mary Muse  
Enkee Simpson  
Kenneth & Laura Simpson  
Nick & Tanya Sinkevich  
Jim & Sara Sinnott  
Anne & Barney Siri  
Arlene & Matthew Sirott  
Fred & Susan Skillman  
Debbie & Stephen Slack  
Gretchen & Steve Sleeper  
Jeff & Liz Slusarz  
Lana & Oleg Smelyanskiy  
Mimi & Rob Smith  
Katie & Tad Smith  
Darlene & Ron Smith  
Sue Broadway & Mike Snyder  
Jin Ho Kim & Keun Sik Son  
Tim Corfman & Mary Sorenson  
Greg & Lorraine Souder  
Liz & Scott Souza  
Lori & Michael Spardaens  
JoAnne Spear  
Dan & Marcy Speck

Linda & Rick Spencer  
Sylvia & Grant Spilman  
Patty & Evan Spinrod  
Miguel & Monica Spiterly  
Arthur & Julia Sprecher  
Joe Squeri  
Deborah Russell-Stacy & Alan Stacy  
Pete & Sally Stafford  
Greg & Terri Stanfield  
Jennifer & Scott Stanko  
Karen & Robert Stankus  
Dan & Erin Sicotte  
Laura Steinberg  
Charles & Julie Stenbridge  
Denise & Sheldon Stenberg  
Carlos & Maria Andersen  
Eileen & Roger Stephens  
Kathy & Tom Stephenson  
Craig & Emily Stewart  
Ed Stewart & Son Concrete, Inc.  
Andrea & Russ Stewart  
Chialo & Scott Stiefvater  
Antoinette Carinci  
Julie & Marshall Stine  
Duane Stinson  
Steve & Yvonne Stinson  
Sandy Bailey & David Stoelk  
Kathleen & Randal Stoller  
Brett & Dawn Stom  
Sue Mason-Stone & Pete Stone  
David & Jane Stringer  
Joan & Marc Strohwig  
Maria Strysko  
Don & Leanne Stump  
Betsy & Curry Stypula  
Cindy & Jerry Sudderth  
Elka & John Suer  
Jennie & Michael Sullivan  
Scott Sumner & Joy Zuber-Sumner  
Colleen & Steve Swain  
Diana & John Swenson  
Christine & Steve Swihart  
Rick & Tammy Sypriano  
Gabriel & Marie Szantai  
Allison & Perry Tabor  
David & Marilyn Tagliareni  
Dan & Holly Tailfer  
David & Lynne Takeuchi  
Becky & Don Talley  
Ania Omski-Talwar & Raj Talwar  
Stephen & Susan Tamchin  
Chunlin & Jiahua Tang  
Angelica & Norman Tang  
Mary & Robert Tang  
Julia Oseland  
Bhaskar & Nagalakshmi Tapa  
Bill & Sharon Taplin  
Doug & Janis Tarter  
Christopher & Elizabeth Taylor

## Parents, continued

Kathy & Parviz Tehrani  
Abby & Ates Temeltas  
Penny & Ron Terry  
Shari Santos  
Haakon & Mette Thallaug  
Bryn & J Scott Thenell  
Arden & John Theodossy  
Jeff & Kathy Thilgen  
Joyce Densmore-Thomas & Glen Thomas  
Janet & Jeff Thomas  
Steve & Tricia Thomas  
Chris & Tracey Thompson  
Kelley Thompson  
Bob & Maria Thompson  
John & Laura Thornton  
Bill & Pamela Thurston  
Bob & Debi Tidd  
Ron Appleton & Sue Tiffany  
Ron Appleton & Sue Tiffany  
Anna & Charlie Todd  
Sheila & Tom Tokos  
Jana & Zdenek Tomskey  
Al & Pamela Tong  
Andrea & Rich Torriggino  
Kelly Tovey  
Robin & Ron Travenick  
Joel & Karen Trestrail  
Heather True  
Ching Cynthia Hsu  
Sophia & Vincent Tsin  
Margaret & Stas Tuholski  
David & Kathy Tutino  
Catherine & Erik Udd  
Janet & Michael Ulrich  
Rick & Sue Underwood  
Beth Unland  
Bettina & Steve Uno  
Erin Meyers  
Nicolas Valladolid  
Alice & Paul Valle-Riestra  
Amber & Michael Vallis  
Ana Maria Noya  
Anne & Gary Van Ness  
Thelma Campagna  
Pam Vandergoan  
Mary Vanderpan  
Lesla Vanoncini  
Tracy Hudson  
Lori & Phil Varlas  
Irina Vasilyeva  
Brenda & Todd Vasos  
Jorge & Marianne Vasquez  
Maria Falla & Gustavo Vassallo  
Mardi & Mike Veiluva  
Lyn Kern  
Adam & Claire Vesely  
Jim & Kristie Vetterli  
Margarita Villa  
Debbie & Rick Villa

Mark Vinzent  
Mike & Pam Volan  
Pam & Philip Volkmann  
Linda Blankenship  
Betty Frazer  
Jennifer & Scott White  
Lisa Word  
Oksana Voitiuk  
Debbie Ayres  
Curt & Polly Wade  
Vaishali & Yogendra Wagh  
Janet & Steve Wagner  
Barry & Nancy Waldman  
Melanie & Steve Walker  
William Walker  
Bob & Deborah Walker  
Diana & Scott Walker  
Marlee Wallingford  
Don & Stacy Walsh  
Dina & Joe Walsh  
Debbie & Mike Walsh  
Daniel & Josephine Wang  
Mei Yu Su & Yu Lin Wang  
Elizabeth & Paul Ward  
Cynthia Morales  
Donnalee & Jeff Wardley  
Jim & Marcy Warner  
Mark & Wendy Warner  
Elise & Leslie "Skip" Warren  
Todd & Trinka Wasik  
Chris & Cindy Watchmaker  
Bonnie & Rod Watkins  
Bonnie & David Watson  
Gabriel J & Melissa Watts  
Teresa Weaver  
Charlie & Nancy Weckel  
John & Tamee Weerts  
Michael & Susan Weinberg-Lynn  
Chris & Dan Weingarten  
Bhing & Jerry Weinstein  
Debbie & Jeremy Weinstein  
Cheryl Morris & Richard Weisgal  
Denise & Gordon Weiss  
Jeff & Sally Welborn  
Barbara & John Welch  
BobAnn & Mike Welden  
Bryan & Judi Welden  
Dan & Lisa Wendt  
Howard & Lisa Wenger  
Claudia & Stuart Wentworth  
Andy & Teresa Wenzel  
John & Teresa Marino  
Brad & Cheryl Whitcomb  
Bryan & LeAnn White  
Dawn & Virgil White  
Pam & Tom Whitman  
Jennifer & Paul Wickboldt  
Michael Shahani & Carley Wiegand  
Karlyn & Stephen Wienker

Debbie & Steve Wiesenthal  
Bill & Jan Wikander  
Debra Wilhelm  
Carrie Beckstrom  
Hal & Mallorie Wilkerson  
Lisa Kern  
Kathy & Phil Williams  
David & Maureen Williams  
David & Mary Williams  
Scott & Whitney Wilson  
Betsy & Peter Wilson  
Kevin & Maureen Wilson  
Betty & Michael Wilson  
Jill Pappenheimer & Richard Wilson  
Beth-Ann Lenger & Scott Wilson  
Melody Wine  
Marci & Sam Winer  
Jan & Mark Wittenberg  
Didi D'Errico & Jerry Wittwer  
Mark & Trudy Wleklinski  
Lisa & Norm Wolf  
Diane & Steve Wolfe  
Gary & Mahre Wolff  
Colleen & Wayne Wolff  
Sabine Arnold-Wood & John Wood  
Sandy & Steve Woods  
Boris Tcherepanov & Maria Xendzova  
Lane & Nancee Yago  
Sara Yamada  
Hongmo & Seongeun Yang  
Anne Kessler  
Charlotte & Gene Yates  
Bruce & Shirin Yazdani  
Maria Osorio & Oscar Yllescas  
Kim Fox-Yoder & Jamie Yoder  
Kesete & Okba Yohannes  
Hyeryon & Youngsun Yoo  
Bill & Julia Younger  
Katherine Yu  
Mergie & Ricky Yu  
Atsushi & Masako Yuki  
Denise Zavaleta  
Donald & Lisa Zec  
Diane Wicks & Hadi Zeghuzi  
Susan Meyers Zeiger & David Zeiger  
Luis & Sue Zepeda  
George Chiu & Lin He  
Emily Ning & Yongsheng Zhu  
Joe & Julie Zouzounis  
Lisa & Tim Zuffi  
Michael & Renee Zummo  
Debbie Adler-Zuniga & Carlos Zuniga



## Walnut Creek Education Foundation

P.O. Box 186

Walnut Creek, California 94597

(925) 933 WCEF (9233)

[contact@wcefk12.org](mailto:contact@wcefk12.org)

[wcefk12.org](http://wcefk12.org)

This annual report was designed and produced at no cost to WCEF thanks to the generous contributions of Robert Anthony.

**Robert Anthony Strategic Marketing and Design**

[robertanthony.com](http://robertanthony.com)

# 2007 / 2008 School Year • WCEF Donation Form

Name: \_\_\_\_\_ Phone: \_\_\_\_\_

Address: \_\_\_\_\_

City: \_\_\_\_\_ State: \_\_\_\_\_ Zip: \_\_\_\_\_

E-mail Address: \_\_\_\_\_

### List All Children

Student Name: \_\_\_\_\_ Grade: \_\_\_\_\_ School: \_\_\_\_\_

Student Name: \_\_\_\_\_ Grade: \_\_\_\_\_ School: \_\_\_\_\_

Student Name: \_\_\_\_\_ Grade: \_\_\_\_\_ School: \_\_\_\_\_

### We Donate \$ \_\_\_\_\_

**Suggested Donation: \$500 per family.** If you can afford to contribute more, your generosity will be greatly appreciated. If this amount isn't possible for your family, whatever you are able to contribute will make a difference.

### Payment Options:

Our full payment is enclosed

Please direct my donation as follows:  All Programs  K-8  9-12

Signature: \_\_\_\_\_

We are pleased to offer payment options and additional opportunities to augment your giving. However, because our budget and funding responsibilities are based on your commitments, it is necessary for us to inform you that your signature on this form implies that you will assume personal responsibility for all outstanding installments and payments due as indicated.

### Payment Information

Enclosed is my check in the amount of \$ \_\_\_\_\_

Please charge my  VISA  MasterCard in the amount of \$ \_\_\_\_\_

Credit Card Number \_\_\_\_\_ Expiration Date \_\_\_\_\_

Signature \_\_\_\_\_ Billing Zip Code \_\_\_\_\_

### Benefit Level Options

See back of Invitation Card for details or visit [WCEFK12.org](http://WCEFK12.org). Each benefit level entitles the donor to a specified number of LL PTSA memberships (memberships are only available for parents, students, teachers and staff of LL). Please indicate the name in which the PTSA memberships should be issued.

White Level - \$500 donation (1 membership)

Maroon Level - \$1,000 donation (2 memberships)

Gold Level - \$2,000 donation (4 memberships)

Knight Level - \$5,000 donation (4 memberships)

PTSA Name(s) \_\_\_\_\_

### Corporate Matching

This is when an employer matches a part or all of an employee's donation to a charity. The employee's donation may have been made via United Way payroll deductions or a direct donation to WCEF. This process must be initiated by the employee through your Human Resources or Payroll department and the paperwork sent to WCEF at PO Box 186, Walnut Creek, CA 94597.

I plan to match my donation with my employer. Company name \_\_\_\_\_

I plan to use the United Way Donor Program - UW#2492. Company name \_\_\_\_\_

Please do not use my/our names in public acknowledgements

### Your donation is tax deductible - WCEF K-12 Non-Profit Tax ID# 94-2915151

Donation forms made possible by generous in-kind donations from Robert Anthony Strategic Marketing & Design, Studio Blue and Minuteman Press, Lafayette

**WCEFK12.org** P.O. Box 186, Walnut Creek, CA 94597 • 925-933-WCEF (9233)